

Westwood Ave. Drainage Swale

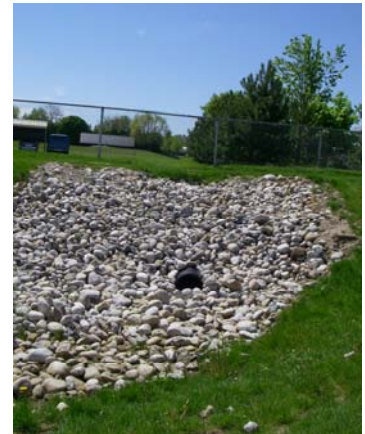
Important Resident Information



The Township has constructed a drainage swale and berms along the rear yards of properties on the south side of Westwood Ave. Some properties on Bender Ave. and Frederick Court also border on this drainage swale. It is anticipated the drainage system will better control surface flows from the land to the west and north of this area. The project also includes minor work in Bender Subdivision Park and improvements to the drainage crossing on Hope Street. The Township has entered into 5 year agreements with the property owners on which the swale has been constructed. The agreements run from 2007 – 2011. The project cost approximately \$84,000 for construction, engineering and agreement costs. The project was fully funded by the Township. Through the master drainage plan process, the Township is examining permanent, long-term options to better control storm flows in this area.

Residents backing onto the drainage system must observe the following rules:

- The swale is not an extension of your backyard
- **Do Not** place or store anything in the swale
- **Do Not** place grass clippings, food scraps, animal waste or other organic material in the swale



The Township will be monitoring the swale and any material placed in the swale will be relocated to the adjacent property for proper storage or disposal. The Township provides a leaf and yard waste depot at the Tavistock Public Works Shed at 18 Hendershot Street.

The Township also requests assistance from residents with the following items:



- Cut the grass in the swale, only if you are able and it is safe (*the Township will only be cutting the swale occasionally*)
- Advise the Township if materials have been placed in the swale
- Advise the Township if the swale is washed out or needs repair
- Monitor the swales effectiveness in storm events and advise the Township

Township of East Zorra-Tavistock

Website: www.twp.ezt.on.ca

Phone: 519.462.2697

May 2009

■ Drainage Swale Location

